

FEATURES

- All the exhaust ports of this spool valve are connectable, providing better environmental protection
- The proven sealing system using ASCO / JOUCOMATIC experience in the processing industry
- Epoxy moulded coil for excellent moisture and heat resistance under wide voltage and temperature range
- The valve offers environmental protection against the ingress of liquids, dusts or any other foreign matters (environmentally-protected construction)
- Large core tube and big pilot orifice to boost magnetic power and prevent dirty air
- Locking manual override as standard

CERTIFICATION

Shock and vibration test	According to IEC 61373, category 1, class B
Salt spray test	According to ISO 9227, 200h
Low temperature test	According to IEC 60068-2-1, test A
High temperature test	According to IEC 60068-2-2, test B
Change of temperature test	According to IEC 60068-2-14, test N

GENERAL

Differential pressure	2 - 10 bar [1 bar = 100 kPa]
Flow (Qv at 6 bar)	860 l / min (ANR)

Fluids (*)	Temperature Range (TS)	Sealings (*)
air, inert gas, filtered	-40°C to +60°C	VMQ (silicone) + PUR (polyurethane)

MATERIALS IN CONTACT WITH FLUID

(*) Ensure that the compatibility of the fluids in contact with the materials is verified

Body	Aluminium, black anodized
End cover (spring)	Aluminium, black anodized
Internal parts	Zamal, stainless steel, POM, aluminium
Sealings	VMQ + PUR
Core and plugnut	Stainless steel
Shading coil	Copper

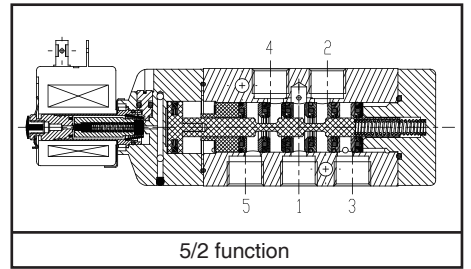
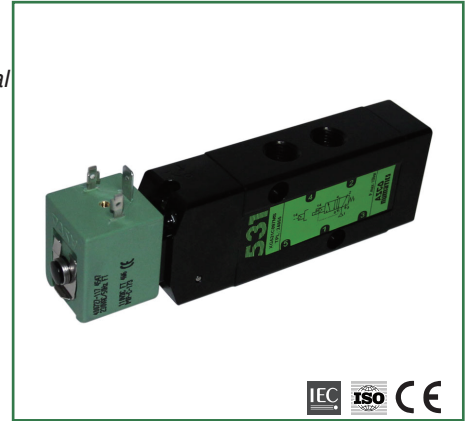
SPECIFICATIONS

Pipe Size	Orifice Size	Flow Coefficient Kv		Operating Pressure Differential (bar)		Power Level	Basic Catalog Number
				Min.	Max. (PS)		
(G)	(mm)	(m ³ /h)	(l/min)		Air	DC (≡)	
5/2 - Solenoid air pilot operated - spring return (monostable)							
1/4	6	0.75	12.5	2	10	5W ⁽¹⁾	SCXG531C097MS TPL: 24055 ⁽²⁾
5/2 - Solenoid air pilot operated and return (bistable)							
1/4	6	0.75	12.5	2	10	5W ⁽¹⁾	SCXG531C098MS TPL: 24055 ⁽²⁾

⁽¹⁾ 110V/DC available with 6W
⁽²⁾ Valve and connectors must be ordered separately

ORDERING EXAMPLES:

	SCXG531 C097 MS	24V/DC	TPL: 24055	
	SCXG531 C098 MS	110V/DC	TPL: 24055	
Basic Number	_____	_____	_____	TPL Number
				Voltage



ELECTRICAL CHARACTERISTICS

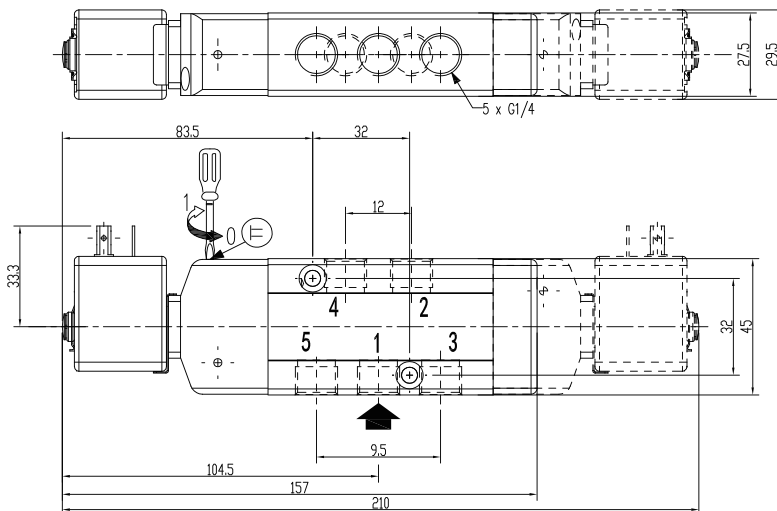
Coil insulation class	F
Connector	Spade plug (cable Ø 6-8 mm or Ø 6-10 mm)
Connector specification	ISO 4400 / EN 175301-803, form A
Electrical safety	IEC 335
Electrical enclosure protection	Moulded IP65 (EN 60529)
Solenoid	4 x 90° rotatable
Standard voltages	DC (=) 12V - 24V - 48V - 72V - 110V
Voltage tolerance	± 30%
Duty cycle	100% ED

Replacement coil		Power Ratings
12 V/DC	400727-181	5W
24 V/DC	400727-185	5W
48 V/DC	400727-118	5W
72 V/DC	400727-156	5W
110 V/DC	400727-117	6W

INSTALLATION

- Installation/maintenance instructions are included with each valve
- The solenoid valves can be mounted in any position without affecting operation
- It is necessary to connect pipes or fittings to the exhaust ports to protect the internal parts of the spool valve and its pneumatic operator if used outside or in harsh environments (dusts, liquids, etc.)
- Threaded pipe connection identifier is: 8 = NPT (ANSI 1.20.3); G = G (ISO 228/1)
- To prevent freezing of condensed water vapor in the valve, the air/inert gas must have a dewpoint at least 8°C below the minimum temperature to which any point of system will be exposed

DIMENSIONS (mm), WEIGHT (Kg)



Weight (kg)	Monostable	0.46
	Bistable	0.64

Including coil(s)